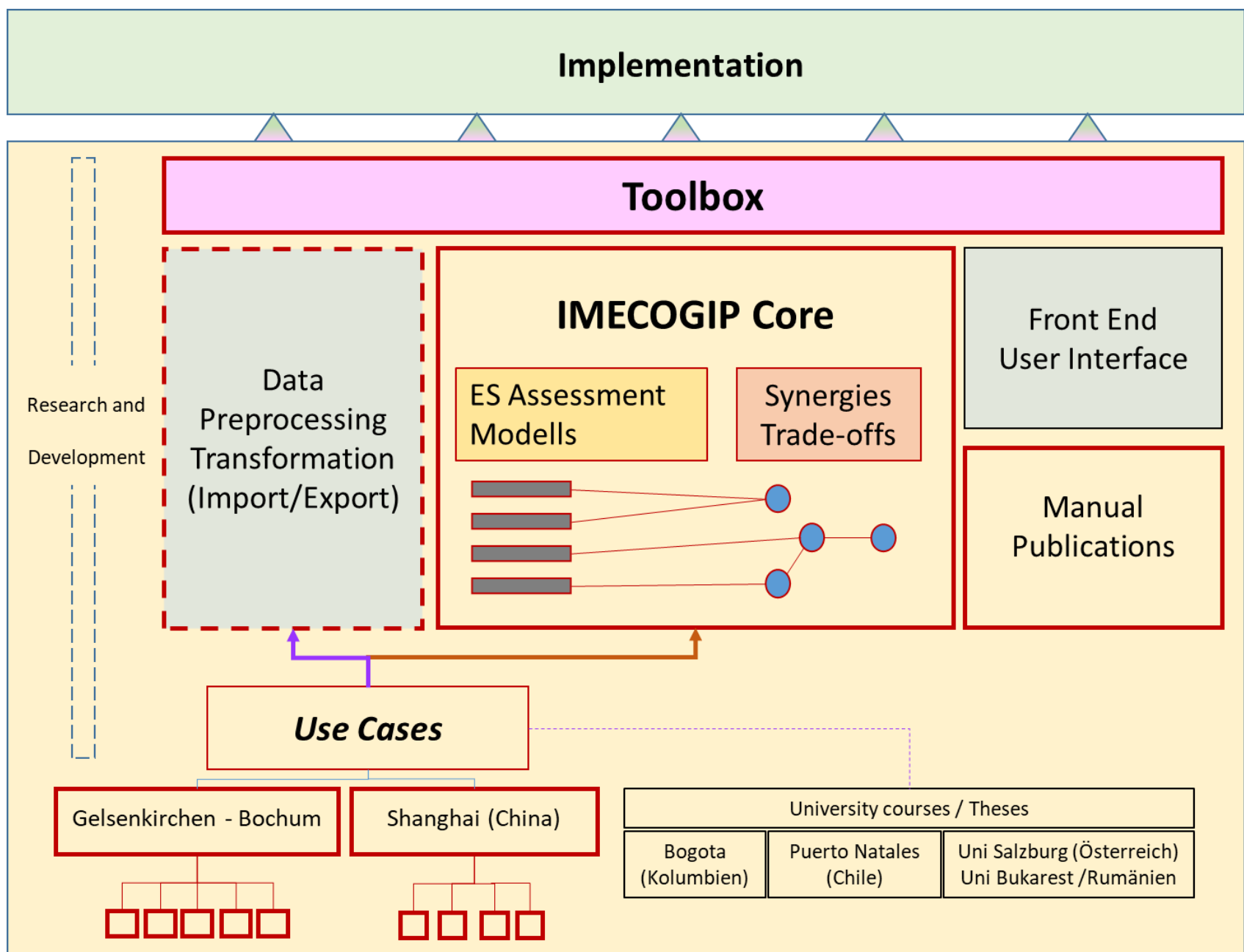


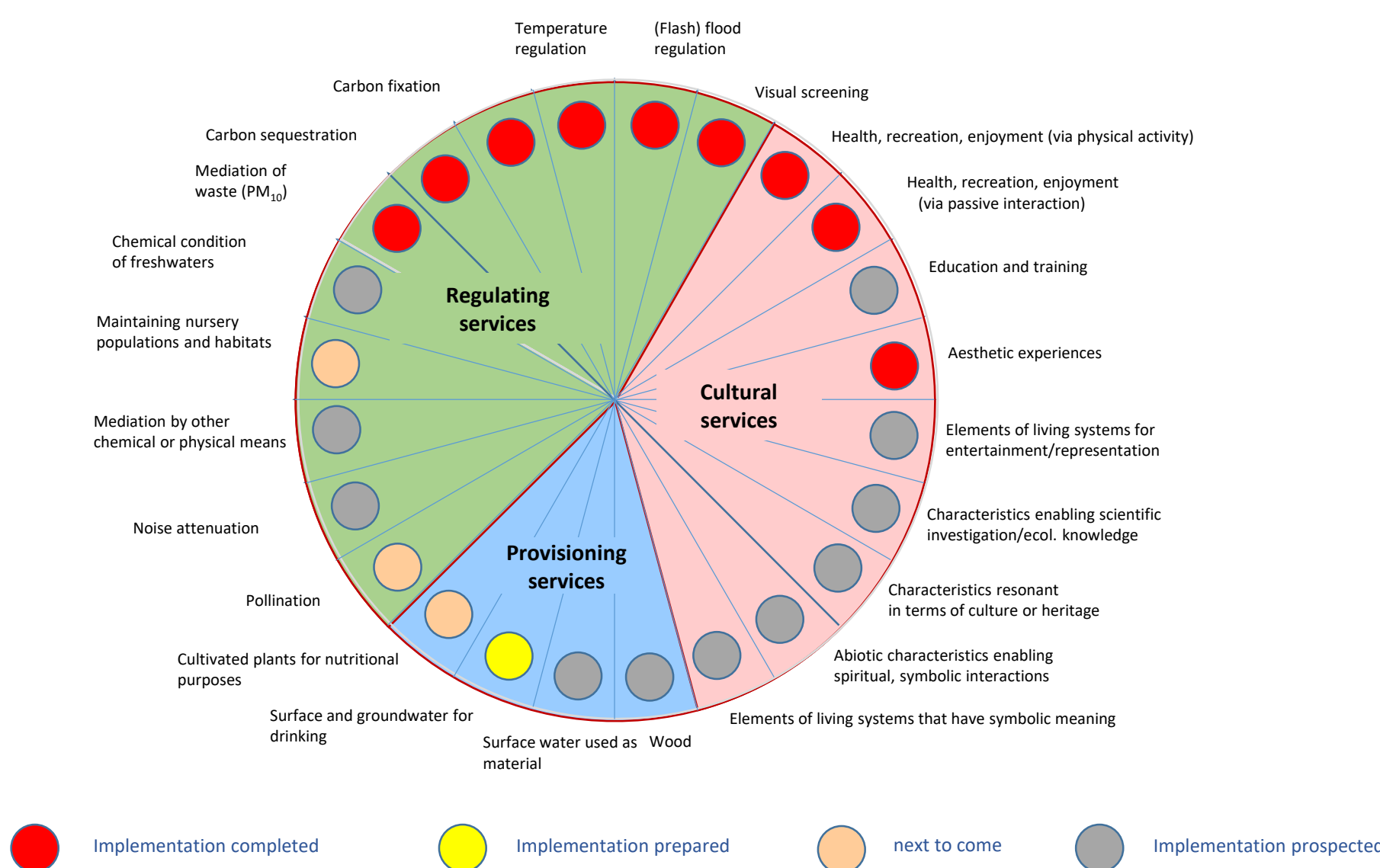
IMECOGIP

Implementation of the Ecosystem Services concept into the Green Infrastructure Planning for resilient urban development

IMECOGIP = Local Citizens' Demand + Scientific knowledge + Local Planning Culture



IMECOGIP toolbox (β-version)



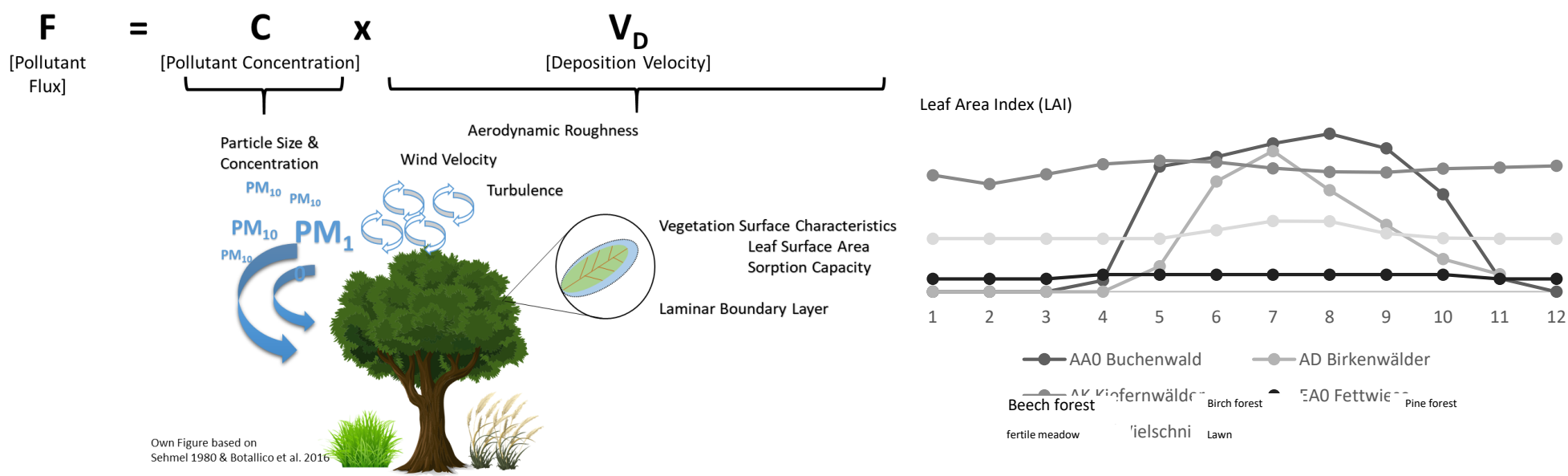
Ministerium für Umwelt, Landwirtschaft,
Natur- und Verbraucherschutz
des Landes Nordrhein-Westfalen



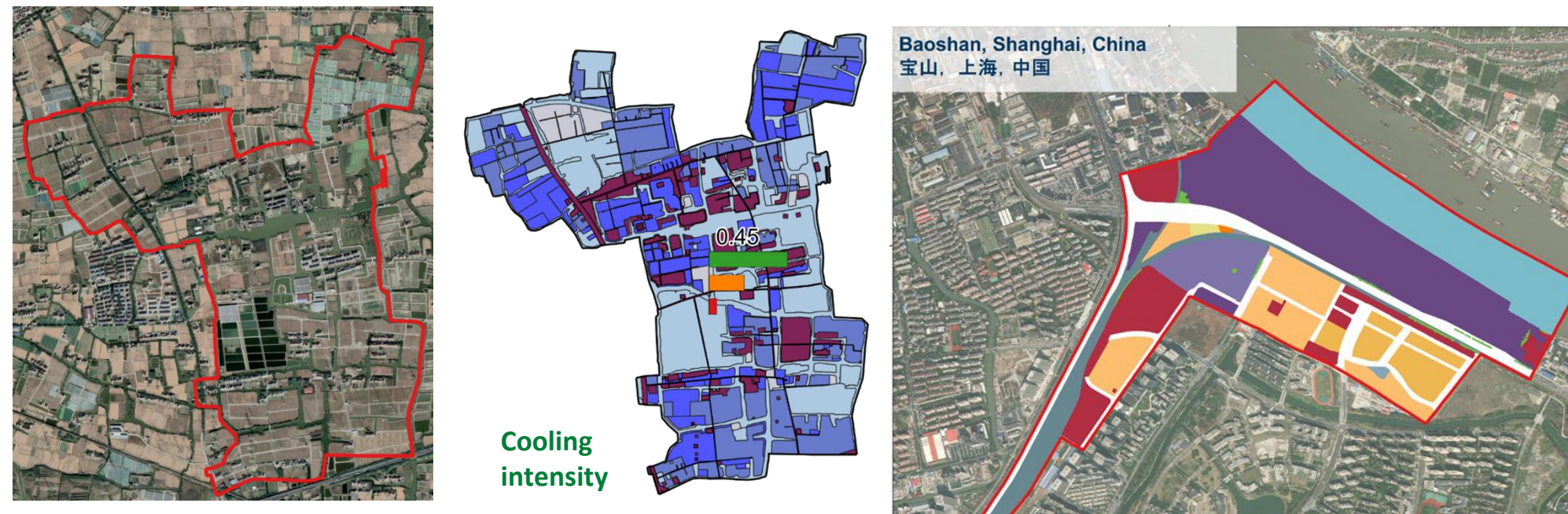
Development of Assessment Tools for China and the Ruhr Metropolis

Testing and Applications in China and in the Ruhr Metropolis

Example: Mediation of traffic-caused pollution (PM₁₀, dry deposition)



Shanghai: Peri-urban renewal and harbor development zone

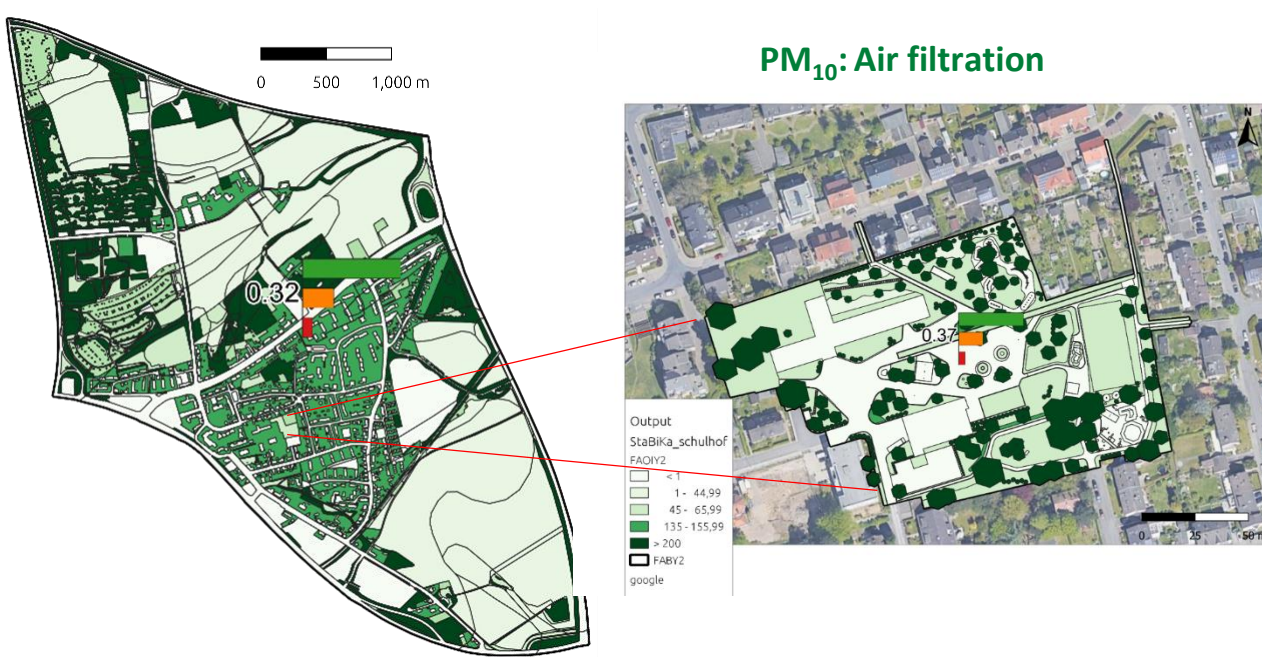


Excerpt: Parameter data base for peri-urban agriculture in Shanghai

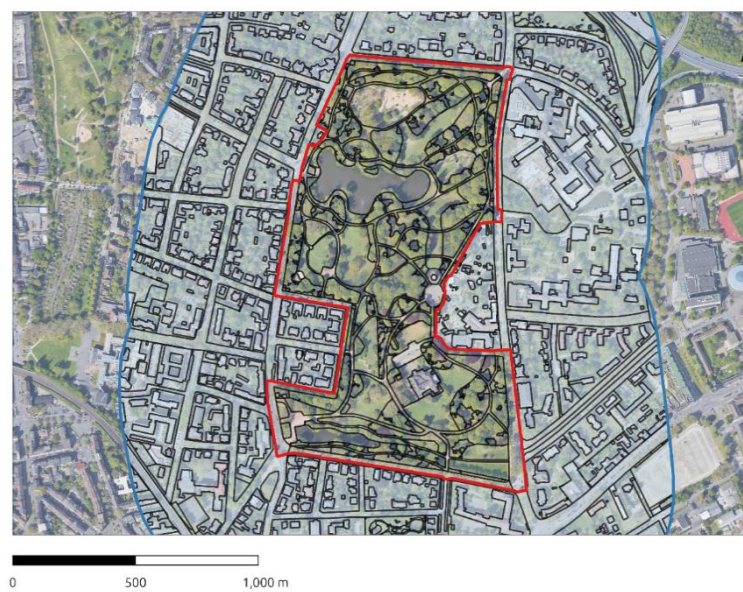
Leaf Area Index (LAI)												
Code	Crops	JAN	FEB	MAR	APR	MAY	JUN	JUL	AUG	SEP	OCT	NOV
GF1	Peach	0.88	0.88	0.88	0.93	2.52	3.70	3.47	3.37	3.69	3.46	2.45
GF2	Pear	0.60	0.60	0.60	0.98	2.37	2.81	2.79	2.63	2.45	2.25	1.45
GA3	Watermelon	0.00	0.00	0.48	1.82	2.04	2.52	0.48	1.82	2.04	2.52	0.00
GA4	Chinese Cabbage	3.37	3.37	3.37	3.37	3.37	3.37	3.37	3.37	3.37	3.37	3.37
GA5	Lettuce	1.33	1.33	1.93	1.93	2.64	3.37	1.33	1.33	1.93	2.64	1.33
GA6	Chinese Chives	0.00	0.00	0.00	0.00	0.14	0.43	0.68	0.75	0.75	0.00	0.00
GA7	Pakchoi	3.37	1.33	1.93	2.64	2.64	3.37	0.00	0.00	1.33	1.33	1.93
GA8	Asparagus Lettuce	2.64	2.64	2.64	1.33	2.64	2.64	2.64	2.64	1.33	1.33	1.93
GA9	Eggplant	0.00	0.60	1.37	1.37	2.56	2.67	0.00	0.60	1.37	2.56	2.67
GA10	Tomato	0.60	0.60	0.60	1.37	2.56	2.67	0.00	0.60	1.37	2.56	2.67
GA11	Green Pepper	0.00	0.00	0.60	1.37	2.56	2.67	0.00	0.60	1.37	2.56	2.67
GA12	Mixed vegetables	1.41	1.23	1.55	1.67	2.39	2.65	0.97	1.15	1.67	1.99	2.33
GC	Greenhouse	1.70	1.48	1.87	2.01	2.87	3.18	1.16	1.38	2.00	2.39	2.79

Crop Coefficient (Kc)												
Code	Crops	JAN	FEB	MAR	APR	MAY	JUN	JUL	AUG	SEP	OCT	NOV
GF1	Peach	0.65	0.65	0.80	1.00	1.00	1.15	1.15	1.15	1.15	1.15	0.85
GF2	Pear	0.65	0.65	0.80	1.00	1.00	1.20	1.20	1.20	1.20	1.20	0.85
GA3	Watermelon	0.20	0.20	0.40	0.70	0.70	1.00	0.40	0.70	0.70	1.00	0.20
GA4	Chinese Cabbage	1.05	1.05	1.05	1.05	1.05	1.05	1.05	1.05	1.05	1.05	1.05
GA5	Lettuce	0.70	0.70	0.85	0.85	1.00	0.70	0.70	0.70	0.85	1.00	0.70
GA6	Chinese Chives	0.70	0.70	0.70	0.70	0.85	0.85	0.85	0.85	1.00	1.00	0.70
GA7	Pakchoi	1.00	0.70	0.70	0.70	1.00	1.00	0.20	0.20	0.70	0.70	0.70
GA8	Asparagus Lettuce	0.88	0.88	0.88	0.70	1.05	1.05	1.05	1.05	0.70	0.88	0.88
GA9	Eggplant	0.20	0.60	0.85	0.85	1.05	1.05	0.20	0.60	0.85	0.85	1.05
GA10	Tomato	0.60	0.60	0.60	0.90	1.20	1.20	0.20	0.60	0.90	1.20	1.20
GA11	Green Pepper	0.20	0.20	0.60	0.88	1.15	1.15	0.20	0.20	0.60	0.88	1.15
GA12	Mixed vegetables	0.67	0.68	0.78	0.83	1.04	1.04	0.56	0.66	0.86	0.87	0.97
GC	Greenhouse	0.67	0.68	0.78	0.83	1.04	1.04	0.56	0.66	0.86	0.87	0.97

Bochum: Urban renewal district and schoolyard



Cultural ecosystem services of urban parks



“IMECOGIP”: Open source GIS-Toolbox– Knowledge-based -Transferable – Scalable
Ecosystem services from region to neighbourhood

Project Coordination: Prof. Dr. Harald Zepp
Ruhr University Bochum -Faculty of Geosciences
+49-(0)234 32 23313 – IMECOIP@RUB.de

